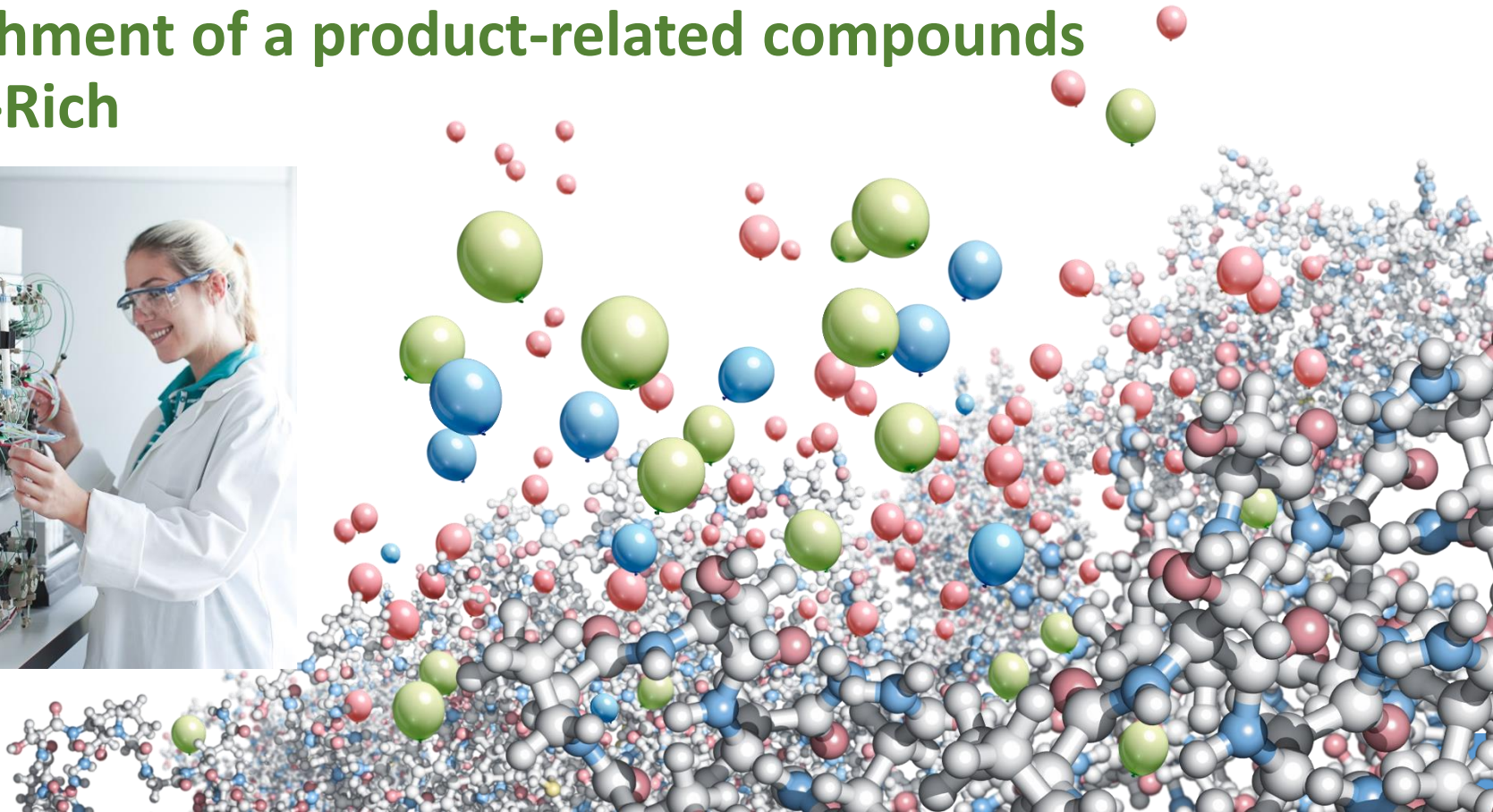




# Contichrom<sup>®</sup> Twin-column FPLC Chromatography

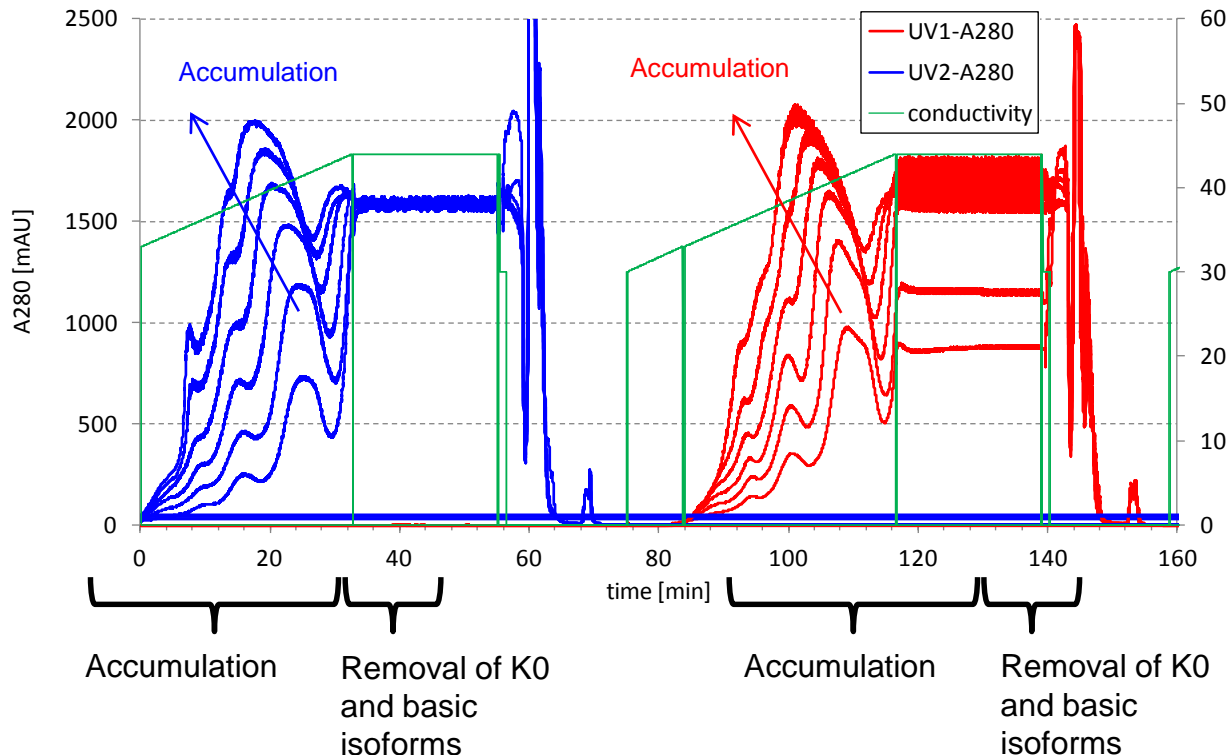
## Enrichment of a product-related compounds by N-Rich





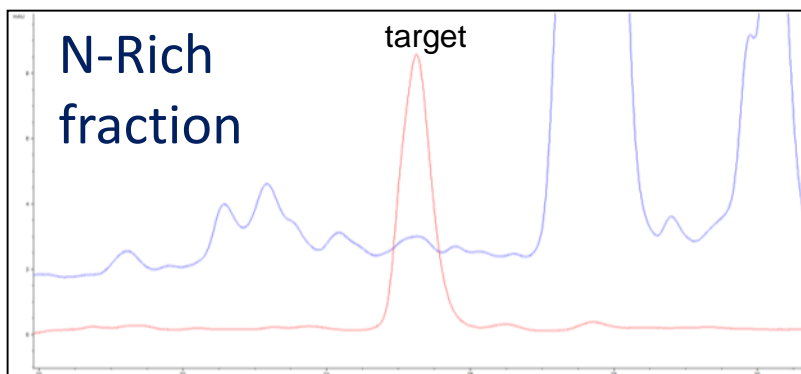
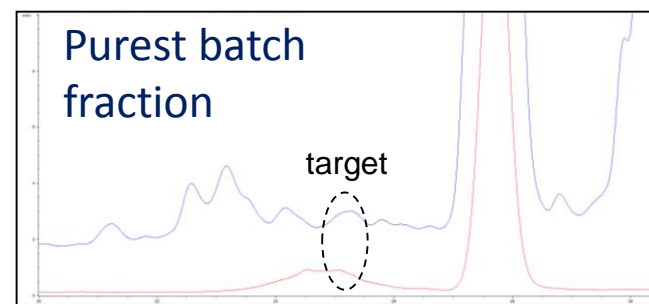
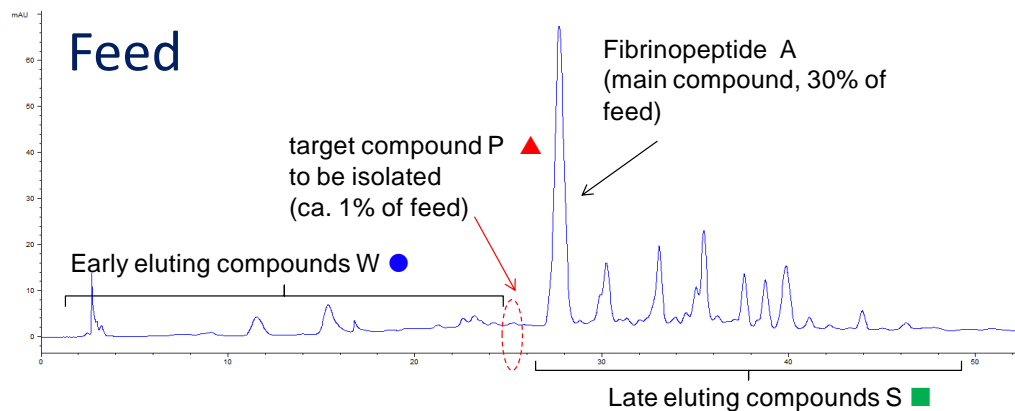
# Biosimilar mAb isoform isolation using N-Rich®

- Complying to ICHQ3A (B2) requirements for impurity characterization
- N-Rich process for isolation of acidic mAb isoforms
- Cycle overlay shows enrichment of acidic isoforms



# N-Rich® Case Study: isolation of peptide impurities

- Task: Isolate product-related impurities from Fibrinopeptide A produced by chemical synthesis



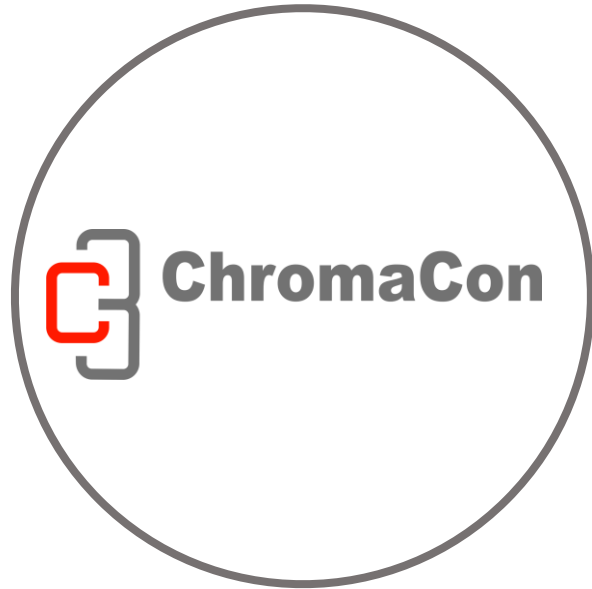
## Results:

Process	Purity	Conc. factor	Enrichment factor *
N-Rich®	> 80%	10x	> 600x
Batch	< 20%	1x	n.a. **

\* with respect to main compound

\*\* not available, purity too low

# Contact Info



[www.chromacon.com](http://www.chromacon.com)



+41-(0)-44 445 2010



[info@chromacon.com](mailto:info@chromacon.com)

