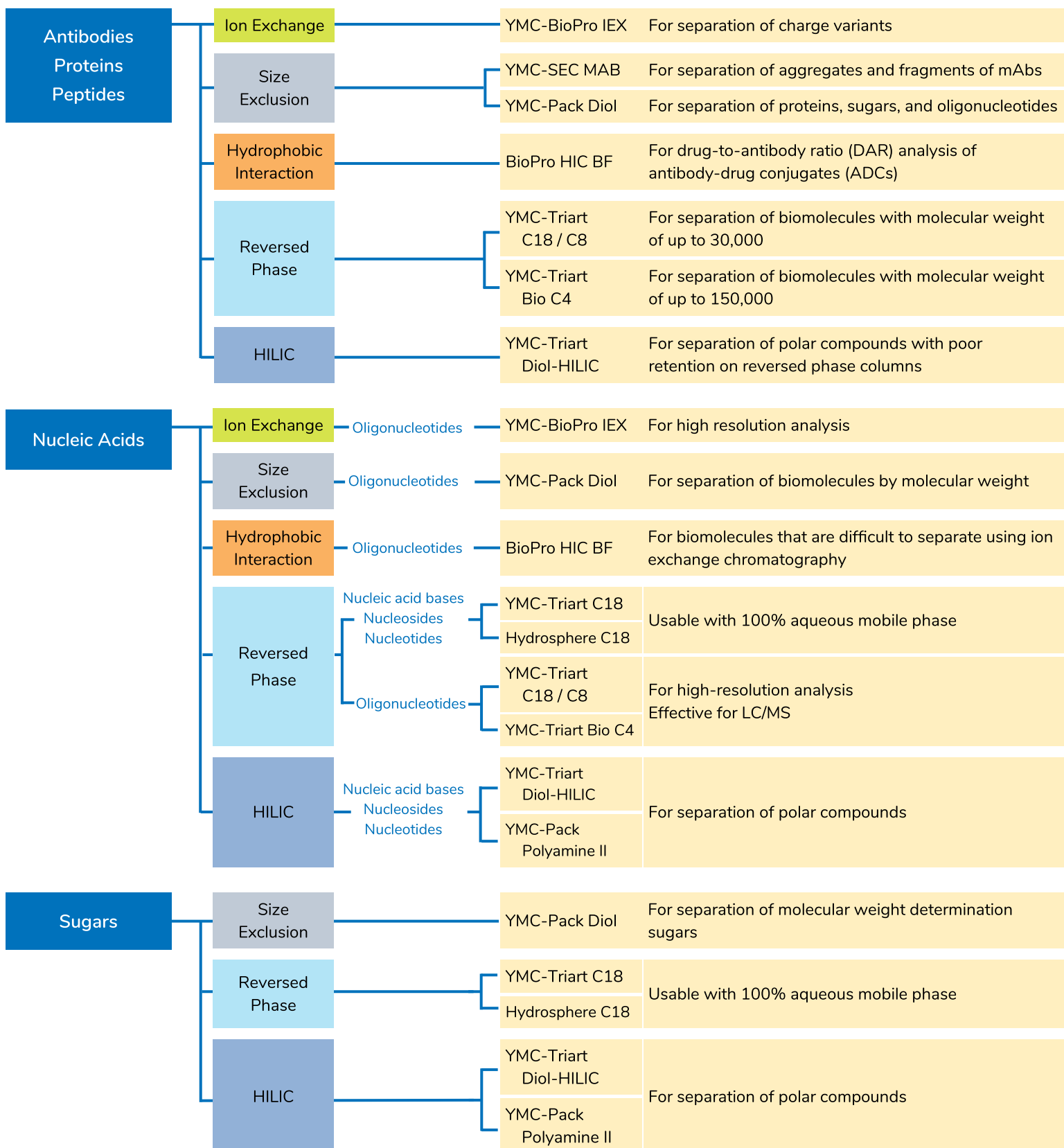
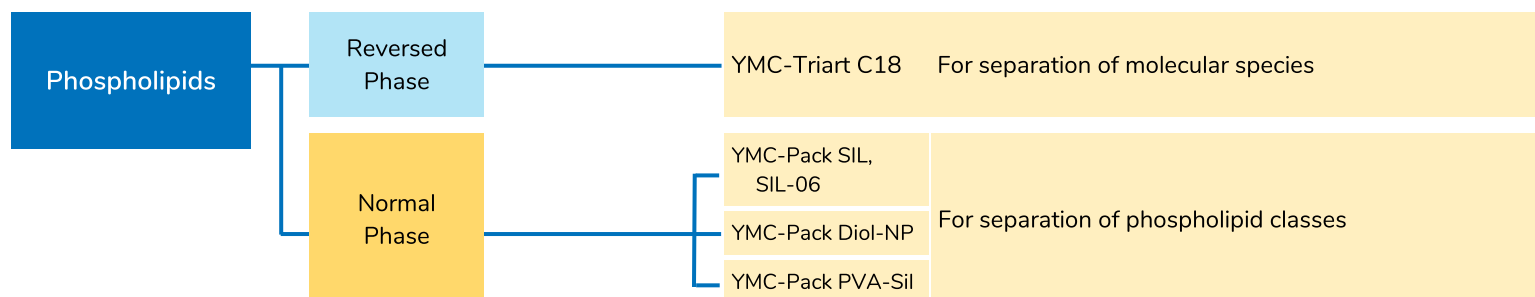
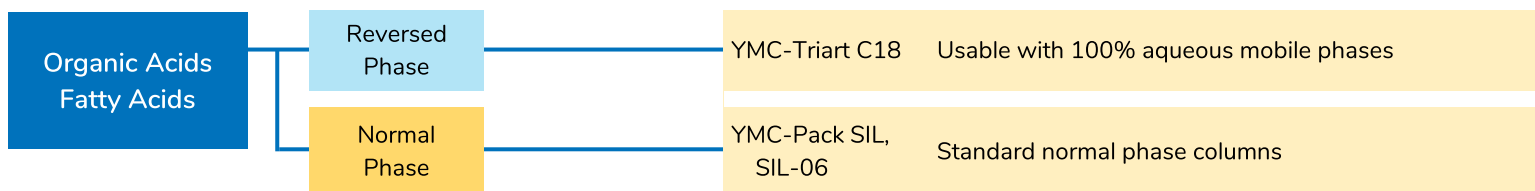
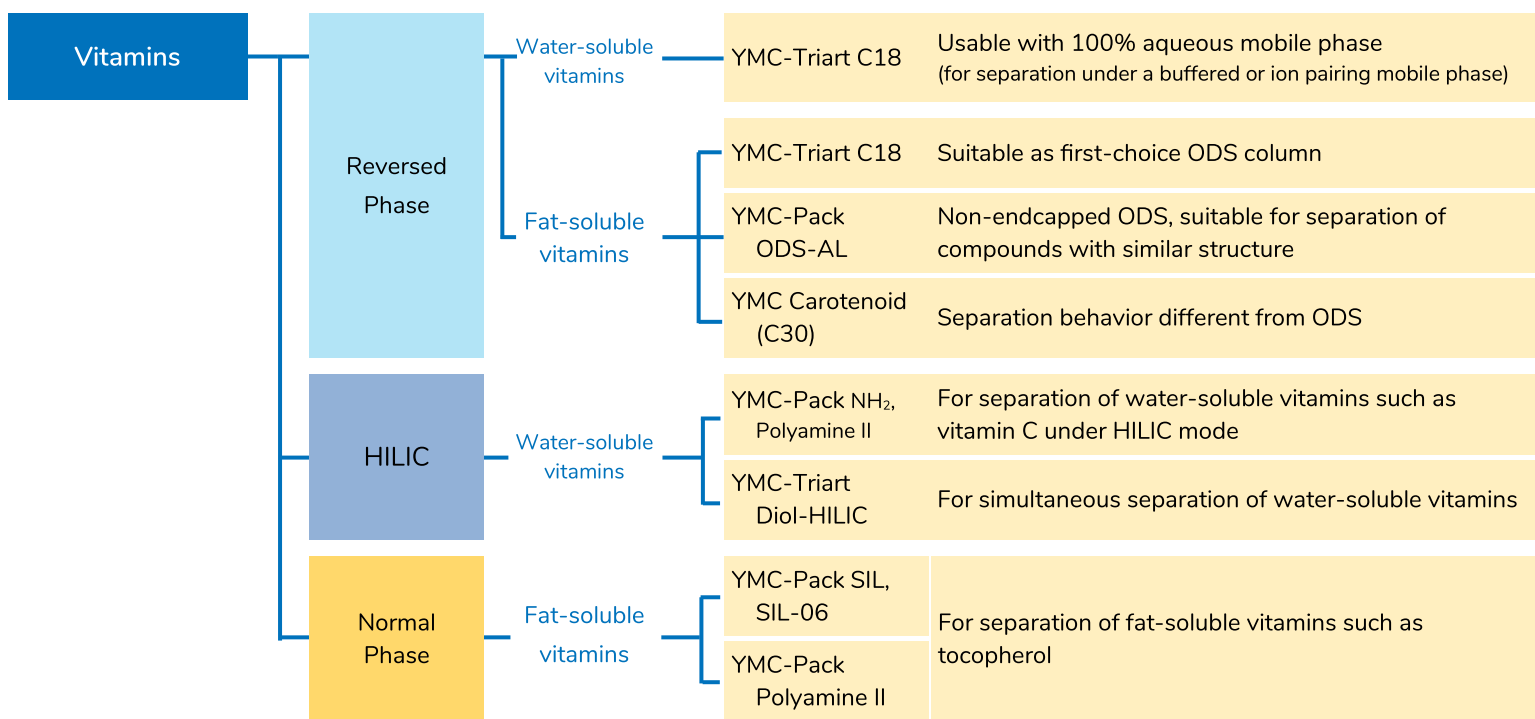
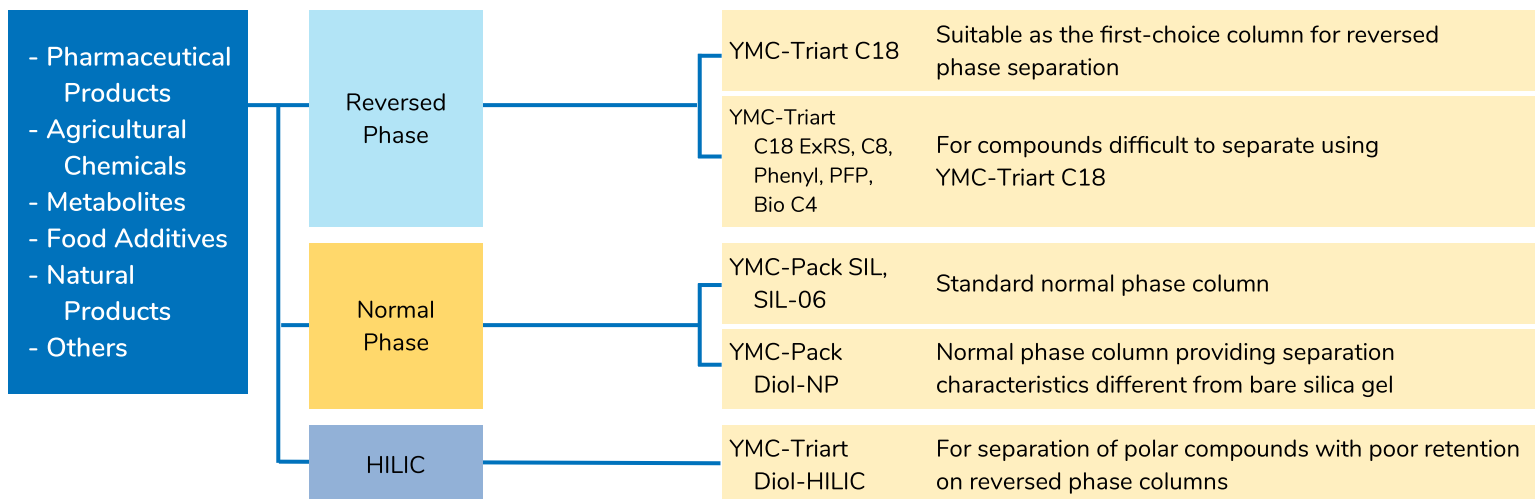
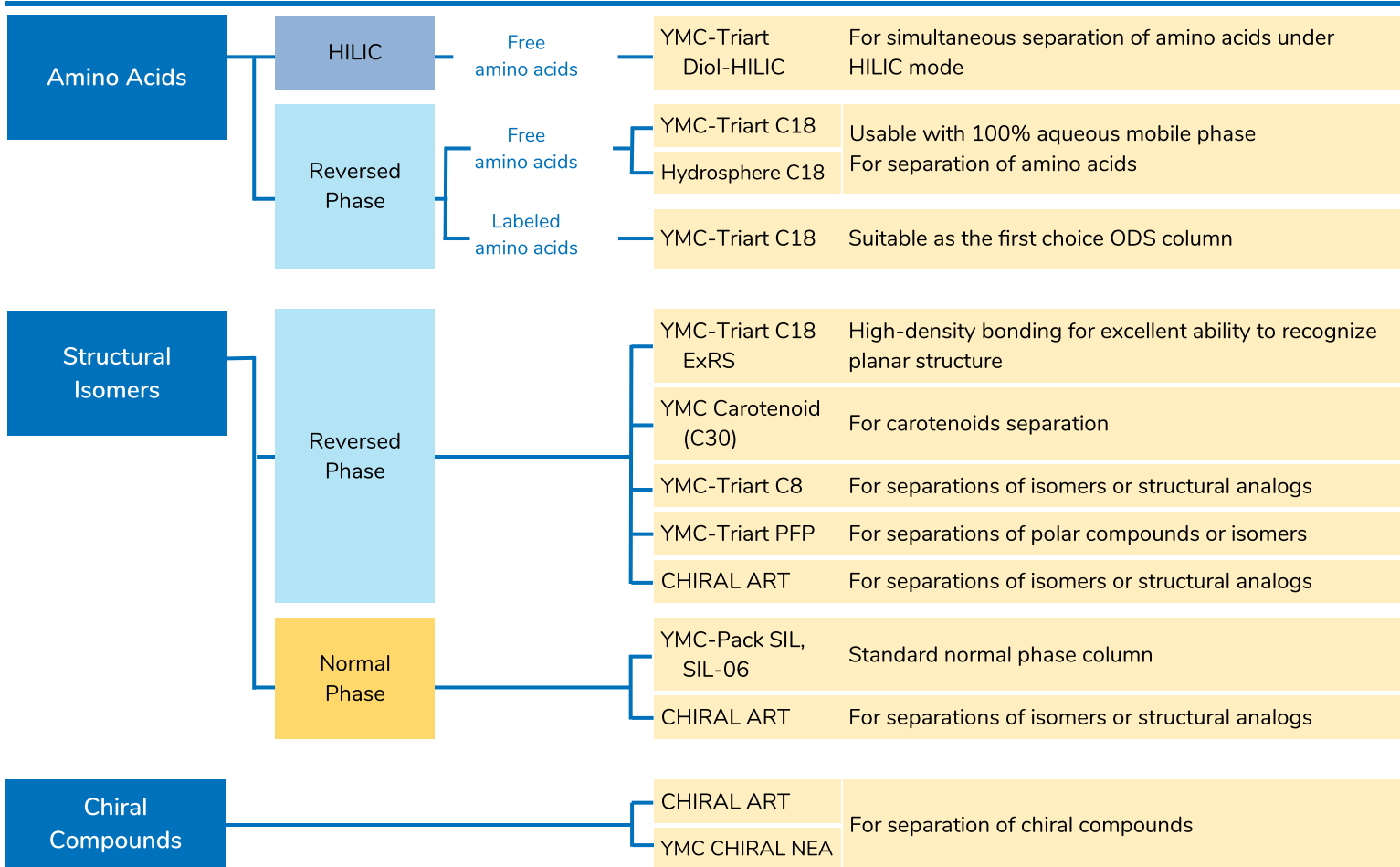


Biochromatography

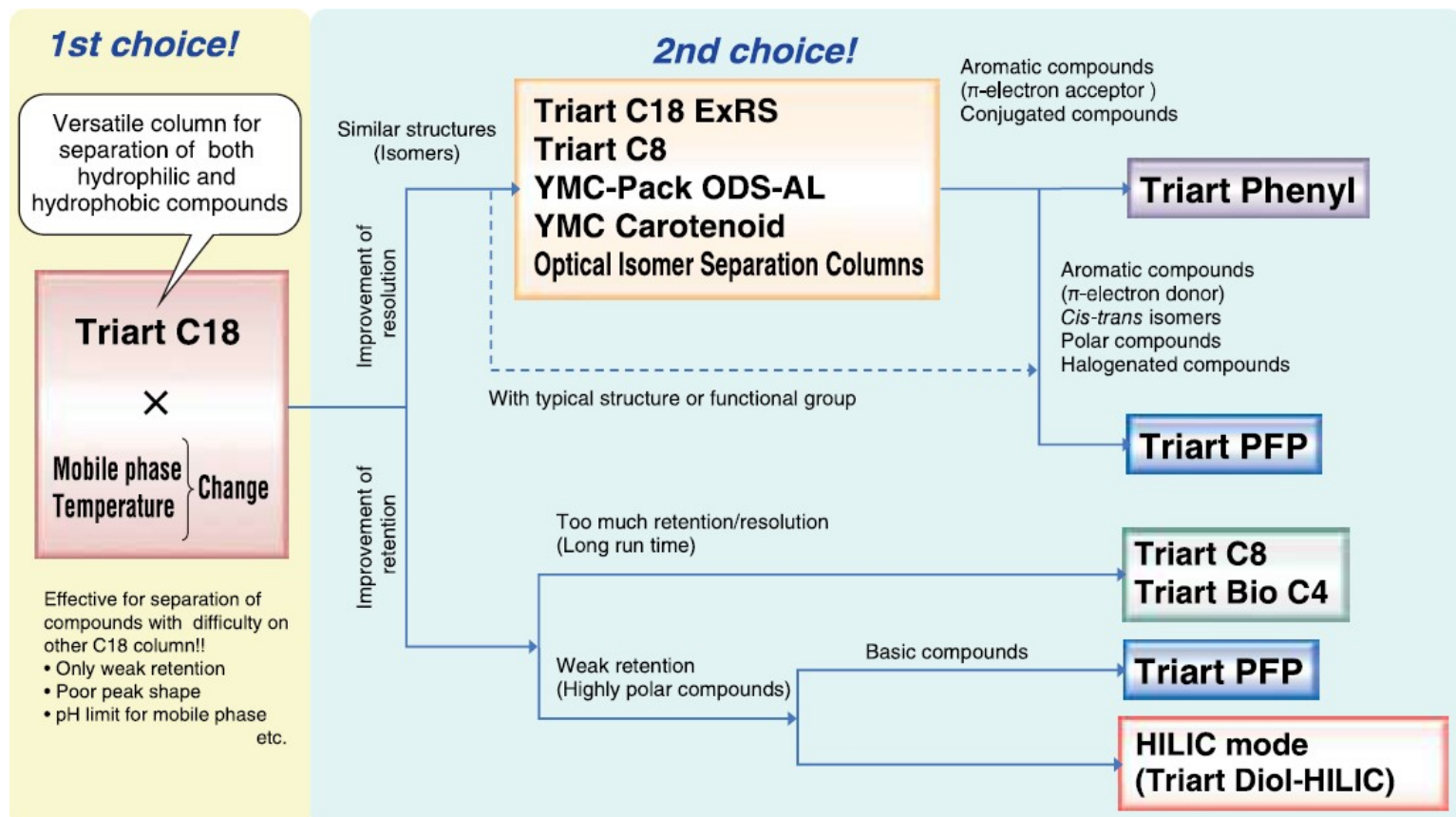


Low molecular weight organic compounds





Reversed Phase



YMC Phase Charts

Need more information?

Download the phase charts below for technical specifications of each product.

Analytical Stationary Phases for RP-HPLC and UHPLC **YMC**

Stationary Phase	Phase Characteristics (based on eluent)	Flow Rate (µm)	Particle Size (µm)	Porosity (Å)	Temp. Range (°C)	Typical Applications
YMC C18	Reverse phase with 12% diethylamine	5.0	5.0	1000	5-35	Peptides, nucleotides, lipids, pharmaceuticals
YMC C18-AR	Reverse phase with 12% diethylamine	5.0	5.0	1000	5-35	Peptides, nucleotides, lipids, pharmaceuticals
YMC C18-AR-2	Reverse phase with 12% diethylamine	5.0	5.0	1000	5-35	Peptides, nucleotides, lipids, pharmaceuticals
YMC C18-AR-3	Reverse phase with 12% diethylamine	5.0	5.0	1000	5-35	Peptides, nucleotides, lipids, pharmaceuticals
YMC C18-AR-4	Reverse phase with 12% diethylamine	5.0	5.0	1000	5-35	Peptides, nucleotides, lipids, pharmaceuticals
YMC C18-AR-5	Reverse phase with 12% diethylamine	5.0	5.0	1000	5-35	Peptides, nucleotides, lipids, pharmaceuticals
YMC C18-AR-6	Reverse phase with 12% diethylamine	5.0	5.0	1000	5-35	Peptides, nucleotides, lipids, pharmaceuticals
YMC C18-AR-7	Reverse phase with 12% diethylamine	5.0	5.0	1000	5-35	Peptides, nucleotides, lipids, pharmaceuticals
YMC C18-AR-8	Reverse phase with 12% diethylamine	5.0	5.0	1000	5-35	Peptides, nucleotides, lipids, pharmaceuticals
YMC C18-AR-9	Reverse phase with 12% diethylamine	5.0	5.0	1000	5-35	Peptides, nucleotides, lipids, pharmaceuticals
YMC C18-AR-10	Reverse phase with 12% diethylamine	5.0	5.0	1000	5-35	Peptides, nucleotides, lipids, pharmaceuticals
YMC C18-AR-11	Reverse phase with 12% diethylamine	5.0	5.0	1000	5-35	Peptides, nucleotides, lipids, pharmaceuticals
YMC C18-AR-12	Reverse phase with 12% diethylamine	5.0	5.0	1000	5-35	Peptides, nucleotides, lipids, pharmaceuticals
YMC C18-AR-13	Reverse phase with 12% diethylamine	5.0	5.0	1000	5-35	Peptides, nucleotides, lipids, pharmaceuticals
YMC C18-AR-14	Reverse phase with 12% diethylamine	5.0	5.0	1000	5-35	Peptides, nucleotides, lipids, pharmaceuticals
YMC C18-AR-15	Reverse phase with 12% diethylamine	5.0	5.0	1000	5-35	Peptides, nucleotides, lipids, pharmaceuticals
YMC C18-AR-16	Reverse phase with 12% diethylamine	5.0	5.0	1000	5-35	Peptides, nucleotides, lipids, pharmaceuticals
YMC C18-AR-17	Reverse phase with 12% diethylamine	5.0	5.0	1000	5-35	Peptides, nucleotides, lipids, pharmaceuticals
YMC C18-AR-18	Reverse phase with 12% diethylamine	5.0	5.0	1000	5-35	Peptides, nucleotides, lipids, pharmaceuticals
YMC C18-AR-19	Reverse phase with 12% diethylamine	5.0	5.0	1000	5-35	Peptides, nucleotides, lipids, pharmaceuticals
YMC C18-AR-20	Reverse phase with 12% diethylamine	5.0	5.0	1000	5-35	Peptides, nucleotides, lipids, pharmaceuticals

Analytical Stationary Phases for Reversed Phase



https://www.ymcamerica.com/resource/analytical_phase_chart_rp/

Analytical Stationary Phases for BioLC



Analytical Stationary Phases for BioLC **YMC**

Phase	Product	Phase Characteristics (based on eluent)	Flow Rate (µm)	Particle Size (µm)	Porosity (Å)	Temp. Range (°C)	Typical Applications
BioLC	BioPha HIC HT	Hydrophobic interaction chromatography, high pressure	5.0	5.0	1000	5-35	Antibodies, drug conjugates (ADC), antibodies, proteins
	BioPha HIC MP	Hydrophobic interaction chromatography, medium pressure	5.0	5.0	1000	5-35	Antibodies, drug conjugates (ADC), antibodies, proteins
	BioPha HIC LP	Hydrophobic interaction chromatography, low pressure	5.0	5.0	1000	5-35	Antibodies, drug conjugates (ADC), antibodies, proteins
Ion Exchange	BioPha IEX GA	Ion exchange chromatography, strong cationic	5.0	5.0	1000	5-35	Antibodies, proteins, peptides, oligonucleotides
	BioPha IEX SP	Ion exchange chromatography, strong anionic	5.0	5.0	1000	5-35	Antibodies, proteins, peptides, oligonucleotides
	BioPha IEX MP	Ion exchange chromatography, medium anionic	5.0	5.0	1000	5-35	Antibodies, proteins, peptides, oligonucleotides
Size Exclusion	YMC-Pack DEAE-S10	Ion exchange chromatography, strong anionic	5.0	5.0	1000	5-35	Antibodies, proteins, peptides, oligonucleotides
	YMC-Pack DEAE-S20	Ion exchange chromatography, strong anionic	5.0	5.0	1000	5-35	Antibodies, proteins, peptides, oligonucleotides
	YMC-Pack DEAE-S30	Ion exchange chromatography, strong anionic	5.0	5.0	1000	5-35	Antibodies, proteins, peptides, oligonucleotides
Reversed Phase	YMC-Pack C18	Reverse phase with 12% diethylamine	5.0	5.0	1000	5-35	Antibodies, proteins, peptides, oligonucleotides
	YMC-Pack C18-AR	Reverse phase with 12% diethylamine	5.0	5.0	1000	5-35	Antibodies, proteins, peptides, oligonucleotides
	YMC-Pack C18-AR-2	Reverse phase with 12% diethylamine	5.0	5.0	1000	5-35	Antibodies, proteins, peptides, oligonucleotides

<https://www.ymcamerica.com/resource/analytical-stationary-phases-for-biolc/>

Purification Resins for General Use **YMC**
NP, RP, and Chiral Phases

Contact your YMC rep or info@ymcamerica.com for more information about these and other YMC resins.

Purification Resins for Bioseparations **YMC**
IEX, SEC, and RP Phases

Contact your YMC rep or info@ymcamerica.com for more information about these and other YMC resins.

Stationary Phase	Flow Rate (µm)	Particle Size (µm)	Porosity (Å)	Temp. Range (°C)	Typical Applications
BioPha C18	5.0	5.0	1000	5-35	Antibodies, proteins, peptides, oligonucleotides
BioPha C18-AR	5.0	5.0	1000	5-35	Antibodies, proteins, peptides, oligonucleotides
BioPha C18-AR-2	5.0	5.0	1000	5-35	Antibodies, proteins, peptides, oligonucleotides
BioPha C18-AR-3	5.0	5.0	1000	5-35	Antibodies, proteins, peptides, oligonucleotides
BioPha C18-AR-4	5.0	5.0	1000	5-35	Antibodies, proteins, peptides, oligonucleotides
BioPha C18-AR-5	5.0	5.0	1000	5-35	Antibodies, proteins, peptides, oligonucleotides
BioPha C18-AR-6	5.0	5.0	1000	5-35	Antibodies, proteins, peptides, oligonucleotides
BioPha C18-AR-7	5.0	5.0	1000	5-35	Antibodies, proteins, peptides, oligonucleotides
BioPha C18-AR-8	5.0	5.0	1000	5-35	Antibodies, proteins, peptides, oligonucleotides
BioPha C18-AR-9	5.0	5.0	1000	5-35	Antibodies, proteins, peptides, oligonucleotides
BioPha C18-AR-10	5.0	5.0	1000	5-35	Antibodies, proteins, peptides, oligonucleotides
BioPha C18-AR-11	5.0	5.0	1000	5-35	Antibodies, proteins, peptides, oligonucleotides
BioPha C18-AR-12	5.0	5.0	1000	5-35	Antibodies, proteins, peptides, oligonucleotides
BioPha C18-AR-13	5.0	5.0	1000	5-35	Antibodies, proteins, peptides, oligonucleotides
BioPha C18-AR-14	5.0	5.0	1000	5-35	Antibodies, proteins, peptides, oligonucleotides
BioPha C18-AR-15	5.0	5.0	1000	5-35	Antibodies, proteins, peptides, oligonucleotides
BioPha C18-AR-16	5.0	5.0	1000	5-35	Antibodies, proteins, peptides, oligonucleotides
BioPha C18-AR-17	5.0	5.0	1000	5-35	Antibodies, proteins, peptides, oligonucleotides
BioPha C18-AR-18	5.0	5.0	1000	5-35	Antibodies, proteins, peptides, oligonucleotides
BioPha C18-AR-19	5.0	5.0	1000	5-35	Antibodies, proteins, peptides, oligonucleotides
BioPha C18-AR-20	5.0	5.0	1000	5-35	Antibodies, proteins, peptides, oligonucleotides

Purification Resins for General Use / Purification Resins for Bioseparations



https://www.ymcamerica.com/resource/bulk_phase_chart/



Your source for chromatography systems, consumables, and services.

YMC America, Inc.
Tel: +1 978 487 1100
info@ymcamerica.com
www.ymcamerica.com